

A photograph showing a person's hand peeling away a layer of white plaster from a wall. The plaster is being removed from the top left, revealing a brick wall underneath. The bricks are reddish-brown and arranged in a standard running bond pattern. The mortar is a light grey color. The background is a plain, light-colored wall.

**OPTIMIZING THE LOOK AND PERFORMANCE
OF YOUR BUILT ENVIRONMENTS.**



Pinchin's Building Science & Sustainability team is dedicated to maximizing the performance of one of your most important assets — your built environment. We understand the science behind each building component and how they interact. Pinchin investigates and implements systemic initiatives that help our client's assets become healthier, more durable and more sustainable.

Whether you are constructing a new building or maintaining an existing one, our goal is to improve energy efficiency and building performance, reduce operating costs, minimize environmental impact and enhance occupant comfort. Our decades of experience and scientific knowledge in building science are part of our foundation in providing superior technical service.

WHY CHOOSE PINCHIN?

OUR PEOPLE

Pinchin has fully trained expert staff with proven methods and quality standards. Our engineers and building scientists are located in offices across Canada where you need them. Our employees come not only from other consultancies or engineering programs, but also directly from the industries we serve. With a high employee satisfaction rating, it's no wonder why Pinchin is able to acquire and keep top talent.

OUR SOLUTIONS

With over 700 staff in over 35 offices across Canada Pinchin can help you no matter where you may need us. We also have coast to coast access to contractors to help us provide timely and effective solutions specific to the current situation. Our state-of-the-art laboratory facility provides accredited, reliable, confidential laboratory results for asbestos, mould, Legionella, bacteria, and environmental odour.

OUR REPUTATION

Most of Pinchin's clientele are based on deep-rooted relationships with a concrete foundation in trust and understanding. We understand the nature and urgency of transactions and client needs. Canadian businesses and their financial institutions rely on Pinchin to identify conditions that may result in unacceptable risk. We continue to be an active partner in our industry and community. We have staff that sit on boards and committees across Canada to represent our clients and help shape policy and legislation that has a direct impact on your business and bottom line.

OUR APPROACH TO SERVICES

We go the extra step to find custom solutions that work for your legal obligations and your business priorities because sometimes, complying with legislation is not enough. Pinchin holds hundreds of seminars and courses annually across Canada that provide the knowledge and understanding to help our clients feel confident in the decisions they may need to make.

Solving challenges to create more durable, healthier and sustainable buildings.

Building Condition Assessment (BCA) and Capital Planning

- BCA without Reserve Fund Planning
- BCA with Reserve Fund Planning
- BCA - Specialty Assessment Option (Mechanical, Roofing, Elevators, Cladding, etc...)

Building Rehabilitation (Concrete, Building Envelope, Roofing)

- Design & Specification Documents
- Tender Documents
- Contract Administration

Building Envelope Consulting

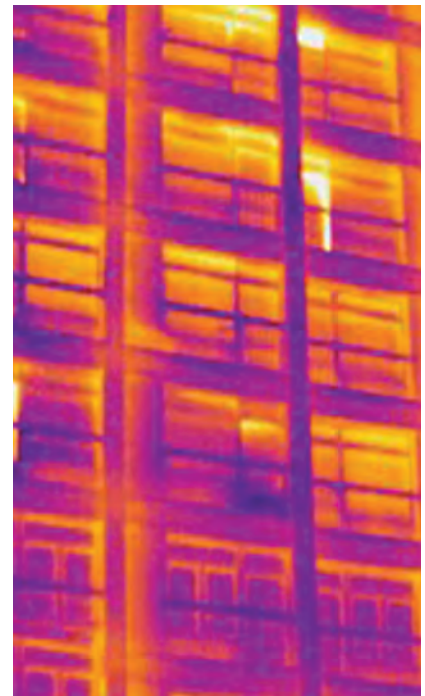
- Building Envelope Commissioning - BECx
- Hygrothermal Modeling
- Design & Testing
- Legal Support

Condominium Services

- Tarion Builder Bulletin 19R Review
- Performance Audits
- Reserve Fund Studies

Building Systems Optimization

- Energy Auditing - ASHRAE, BOMA
- Design
- Commissioning



PINCHIN LTD. OFFICES

pinchin.com | 1.855.PINCHIN

- Abbotsford, BC
- Brandon, MB
- Calgary, AB
- Comox, BC
- Edmonton, AB
- Hamilton, ON
- Kelowna, BC
- Kenora, ON
- Kingston, ON
- London, ON
- Mississauga, ON
- Nakusp, BC
- North Bay, ON
- Oshawa, ON
- Ottawa, ON
- Peterborough, ON
- Red Deer, AB
- Regina, SK
- Richmond, BC
- Sault Ste. Marie, ON
- Saskatoon, SK
- St. Catharines, ON
- Sudbury, ON
- Tilbury, ON
- Timmins, ON
- Toronto, ON
- Victoria, BC
- Waterloo, ON
- Winnipeg, MB



As a member of The Pinchin Group we offer our services from offices across Canada. Visit thepinchingroup.com for details and locations.

THE PINCHIN GROUP HEAD OFFICES

PINCHIN LTD.

Mississauga

2470 MILLTOWER CRT.,
MISSISSAUGA, ON
L5N 7W5

info@pinchin.com
pinchin.com

1.855.PINCHIN (746-2446)
T 905.363.0678
F 905.363.0681

PINCHIN LEBLANC ENVIRONMENTAL

Dartmouth

42 DOREY AVENUE,
DARTMOUTH, NS
B3B 0B1

info@pinchinleblanc.com

T 902.461.9999
F 902.461.9932

LE GROUPE GESFOR POIRIER, PINCHIN

Montréal (St-Léonard)

6705 JEAN-TALON EST, BUR 211,
MONTREAL, QC
H1S 1N2

info@gesfor.com
gesfor.com

T 514.251.1313
F 514.251.1818

Keep up to date with today's regulations

Attend one of our complimentary information sessions to stay current. For more details, visit pinchin.com/courses. Learn about important regulatory changes, upcoming Pinchin courses, complimentary sessions and related trade shows by following us on social media.

 [linkedin.com/company/pinchin-ltd](https://www.linkedin.com/company/pinchin-ltd)

 [facebook.com/PinchinLtd](https://www.facebook.com/PinchinLtd)

 [@PinchinLtd](https://twitter.com/PinchinLtd)

